



**SUBMERSIBLE PUMPS & MOTORS
(50 HZ / 60 HZ)**

www.marwaanpumps.com

CHASING EXCELLENCE
AGRICULTURE ▪ INDUSTRIAL ▪ RESIDENTIAL



ADDRESS:
117, VIHAN SQUARE, ODE,
DASKROI, AHMEDABAD - 382425,
GUJARAT, INDIA

CALL US:
+91 94271 04110

EMAIL:
marwaanpumps@gmail.com
export@marwaanpumps.com
WEB: www.marwaanpumps.com

GSTN NO: 24ACDFM8689G1ZS

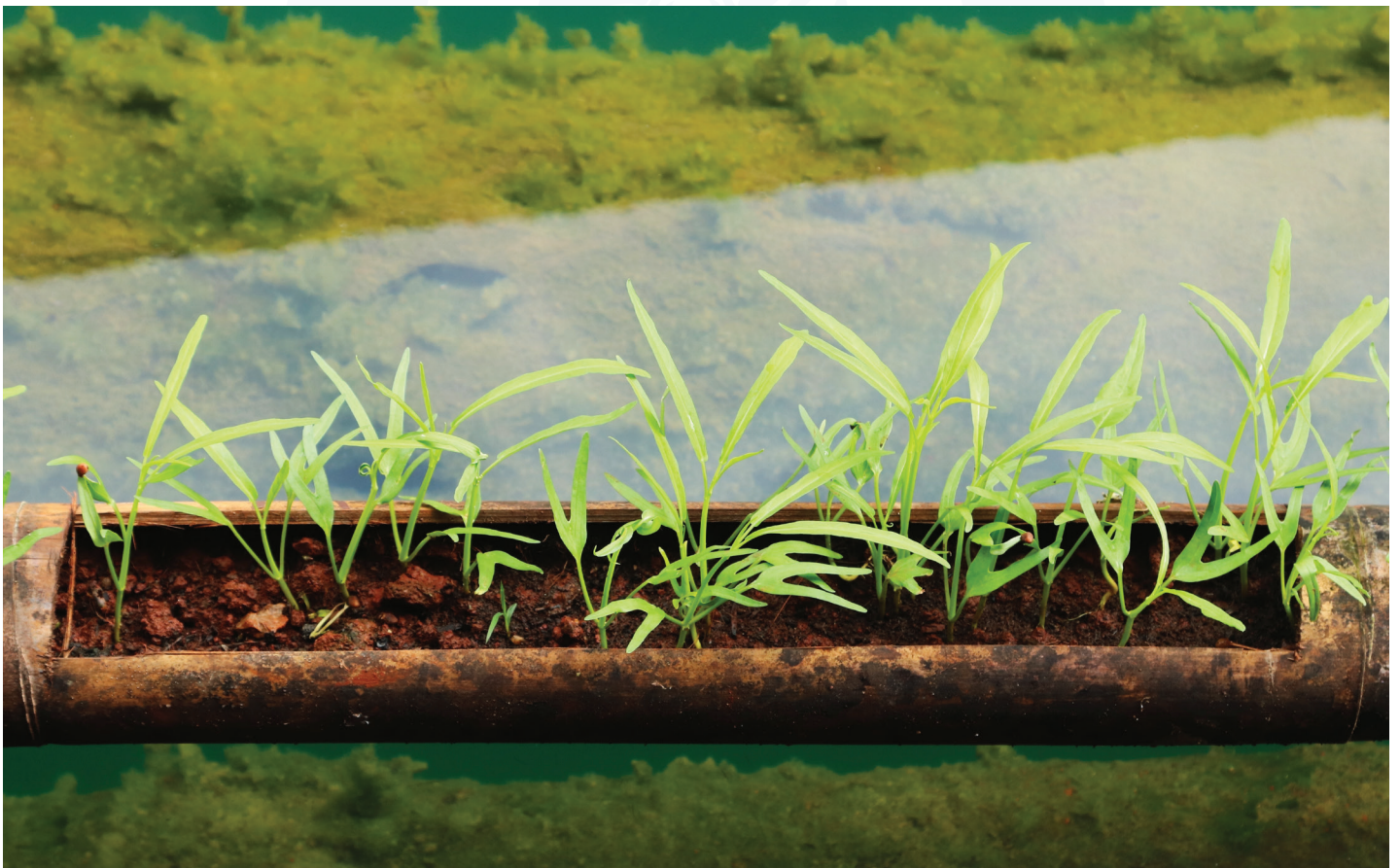
PAN NO: ACDFM8689G

4" WATER FILLED SUBMERSIBLE MOTOR

Marwaan submersible motors are water-lubricated, designed for installation in 4-inch diameter or larger water wells. These motors operate with high torque in Single-phase Capacitor Start Capacitor Run (CSCR) system and can be easily rewound and repaired.

Marwaan submersible motors are robust, rewindable, and pre-filled with clean water. The stator winding is of polypropylene copper winding wires. It features water-lubricated radial and thrust bearings. Dynamically balanced rotors of these Marwaan Series submersible motors maintain uniform clearance to give better efficiency and increase the life cycle of the water-lubricated bush bearings. Specially designed high-performance thrust bearings are used to withstand high axial thrust loads.

Pressure-equalizing rubber diaphragm is provided to guard against pressure and volume variations due to thermal expansion of water inside the motor. The motor is sealed by O-rings, shaft seals, and sand guards to prevent leakage of motor lubricant and ingress of well water, sand, and fibre particles into the motor. Mounting dimensions of motors are in accordance with "NEMA" standard.



PRODUCT SPECIFICATION

- Upper & Lower Housing and Motor Base: Stainless Steel and CI
- Stator Shell : SS 304
- Motor Shaft : SS 431
- Winding Wire : Polypropylene
- Shaft Extension & Coupling Dimensions: As per NEMA Standards
- Degree of Protection : IP 68
- Max Water Temperature: 35°C
- Nos. of Starts per Hour : Max 20 at regular intervals
- Voltage Variation : +6%/-10% at rated voltage
- Max Depth Immersion : 400 metres
- Motor Cable Length : 3.0 metres (3 core/4 core)
- Maximum Outer Diameter: 98 mm
- Power Range : 0.37 kW – 2.20 kW - Single-phase
- : 0.75 kW – 7.50 kW - Three-phase
- Versions :
- AC Single-phase : 220–230 Volt / 50 Hz
- AC Three-phase : 380 - 400 - 415 Volt / 50 Hz
- : 220 - 380 - 460 Volt / 60 Hz
- Direct Online (DOL)
- Type of Duty : S1 (Continuous)

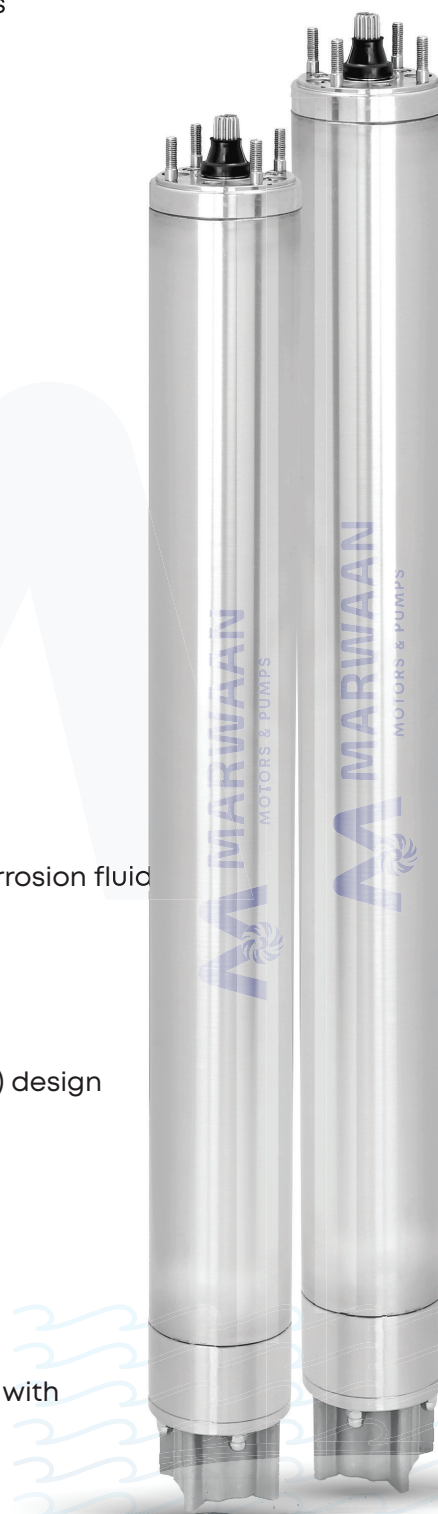
PRODUCT FEATURES

- Marwaan Water Lubricated Submersible Motor is robust, rewindable, and pre-filled with clean water mixed with anti-corrosion fluid
- Bearing: Water-lubricated radial and thrust bearing (Carbon V/S Chrome Steel)
- Shaft extension made of Stainless Steel AISI 420
- High-efficiency electrical design for lower operating cost
- Single-phase motors are Capacitor Start Capacitor Run (CSCR) design
- Pressure compensation diaphragm
- All single-phase motors require a control box

PRODUCT APPLICATION

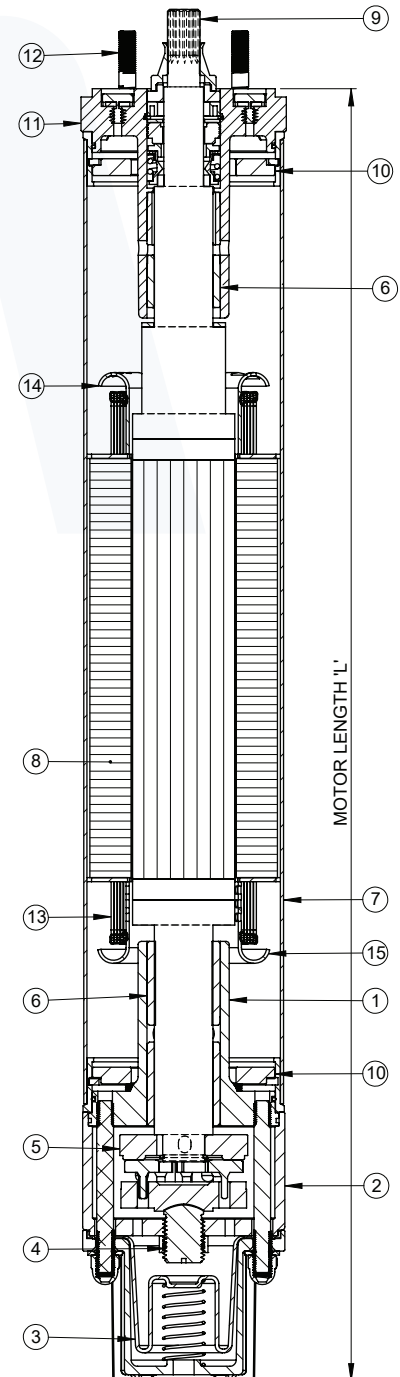
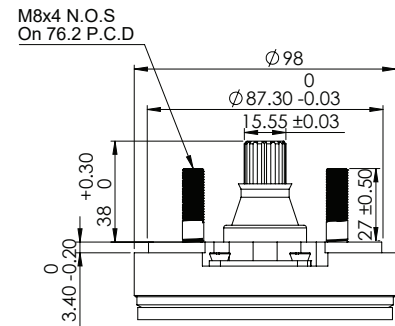
Unnati prime mover submersible motors are suitable to couple with deep well submersible pumps used for:

- Residential Purpose
- Gardens & Horticulture
- Irrigation
- Drip & Sprinkler Systems
- Fountains
- Mining Industries
- Industrial Water Supply
- Oil & Gas Industries
- Pressure Boosting Units



4" WATER FILLED SUBMERSIBLE MOTOR

TYPE A (FULLY SS)



Sr. NO.	DESCRIPTION	QTY.
1	LOWER BUSH HOUSING	1
2	LOWER PART-2	1
3	BREATHER DIAPHRAGM	1
4	ROCKER SUPPORT	1
5	THRUST BEARING	1
6	BEARING BUSH	4
7	STATOR TUBE	1
8	STATOR STAMPING	AS PER S.L.
9	ROTOR	1
10	STATOR COLLAR	2
11	UPPER BUSH HOUSING	1
12	S.S. STUD	4
13	WINDING WIRE	
14	UPPER WINDING SAFETY CAP	1
15	LOWER WINDING SAFETY CAP	1

