



**SUBMERSIBLE PUMPS & MOTORS
(50 HZ / 60 HZ)**

www.marwaanpumps.com

CHASING EXCELLENCE
AGRICULTURE ▪ INDUSTRIAL ▪ RESIDENTIAL



ADDRESS:
117, VIHAN SQUARE, ODE,
DASKROI, AHMEDABAD - 382425,
GUJARAT, INDIA

CALL US:
+91 94271 04110

EMAIL:
marwaanpumps@gmail.com
export@marwaanpumps.com
WEB: www.marwaanpumps.com

GSTN NO: 24ACDFM8689G1ZS

PAN NO: ACDFM8689G

6" WATER FILLED CI KLASSIC SUBMERSIBLE MOTOR

Marwaan submersible motors are water-lubricated, designed for installation in 6-inch diameter or larger water wells. These motors can be easily rewound & repaired. Marwaan submersible motors are robust, rewindable, and pre-filled with clean water. The stator winding is of PVC or polypropylene insulated copper winding wires. It features water-lubricated radial and thrust bearings.

Dynamically balanced rotors of these Marwaan submersible motors maintain uniform clearance to give better efficiency and increase the life cycle of the water-lubricated bush bearings. Specially designed high-performance thrust bearings are used to withstand high axial thrust loads.

Pressure-equalizing rubber diaphragm is provided to guard against pressure and volume variations due to thermal expansion of water inside the motor. The motor is sealed by O-rings, shaft seals, and sand guards to prevent leakage of motor lubricants and ingress of well water, sand, and fibre particles into the motor. Mounting dimensions of motors are in accordance with the NEMA standard.



PRODUCT SPECIFICATION

- Rewindable
- Upper & Lower Housing : Graded CI Casting with CED or PU Paint
- Motor Base : Graded CI Casting with CED or PU Paint
- Stator Shell : SS 304
- Motor Shaft : SS 431 / Shaft Extension SS 304
- Winding Wire : Polypropylene or PVC insulated
- Shaft Extension & Coupling Dimensions: As per NEMA Standards
- Degree of Protection : IP 68
- Max Permissible Temperature : 35°C (Ambient Temp: 45°C)
- Nos. of Starts per Hour : Max 20 at regular intervals
- Voltage Variation : +6%/-10% at rated voltage
- Max Depth Immersion : 500 metres
- Motor Cable Length : 3.0 metres (3 core/4 core)
- Maximum Outer Diameter : 142 mm
- Power Range : 4.0 kW – 45 kW
- Versions :
- A.C. Three-phase : 380 - 400 - 415 Volt / 50 Hz
- : 230 - 380 - 460 Volt / 60 Hz
- Direct Online (DOL) : - 4.0 kW - 45kW
- Star Delta (S.D.) : - 7.5kW - 45kW
- Starting Method : Direct Online (DOL), Star Delta (S.D.)
- Type of Duty : S1 (Continuous)

PRODUCT FEATURES

- Marwaan Submersible Motors are robust, rewindable, and pre-filled with clean water mixed with anti-corrosion fluid
- Stator shell with corrosion-resistant Stainless Steel
- Bearing: Water-lubricated radial and thrust bearing
- Shaft extension made of Stainless Steel AISI 304
- High-efficiency electrical design for lower operating cost
- Pressure compensation diaphragm

PRODUCT APPLICATION

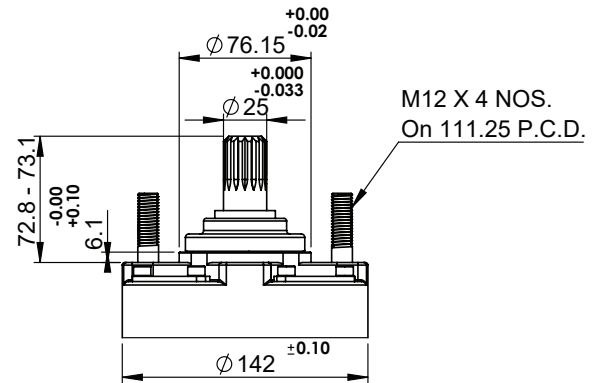
Marwaan prime mover submersible motors are suitable to couple with deep well submersible pumps used for:

- | | |
|---------------------------|----------------------------|
| Residential Purpose | • Drip & Sprinkler Systems |
| • Irrigation | • Mining Industries |
| • Fountains | • Oil & Gas Industries |
| • Industrial Water Supply | • De-watering |
| • Pressure Boosting Units | • Fire Fighting |
| • Gardens & Horticulture | |





6" WATER FILLED CI KLASSIC SUBMERSIBLE MOTOR



Sr. NO.	DESCRIPTION	QTY.
1	MOTOR BASE	1
2	BREATHER DIAPHRAGM	1
3	DIAPHRAGM SPRING	1
4	LOWER PART	1
5	ROCKER SUPPORT	1
6	THRUST BEARING	1
7	LOWER BUSH HOUSING	1
8	CARBON BUSH	4
9	STATOR STAMPING	AS PER S.L.
10	STATOR TUBE	1
11	COLLAR	1
12	ROTOR	2
13	STUD	1
14	UPPER BUSH HOUSING	1
15	MECHANICAL SEAL	1
16	CONNECTING PIECE	1
17	S.S. COLLER STUD	4
18	SPRING CAP	1
19	INSULATED WINDING WIRE	

