



**SUBMERSIBLE PUMPS & MOTORS  
(50 HZ / 60 HZ)**

[www.marwaanpumps.com](http://www.marwaanpumps.com)



**CHASING EXCELLENCE**  
AGRICULTURE ▪ INDUSTRIAL ▪ RESIDENTIAL



**ADDRESS:**  
117, VIHAN SQUARE, ODE,  
DASKROI, AHMEDABAD - 382425,  
GUJARAT, INDIA

**CALL US:**  
+91 94271 04110

**EMAIL:**  
[marwaanpumps@gmail.com](mailto:marwaanpumps@gmail.com)  
[export@marwaanpumps.com](mailto:export@marwaanpumps.com)  
**WEB:** [www.marwaanpumps.com](http://www.marwaanpumps.com)

**GSTN NO:** 24ACDFM8689G1ZS

**PAN NO:** ACDFM8689G



# 6" WATER FILLED CI PREMIUM SUBMERSIBLE MOTOR

**Marwaan** submersible motors are water-lubricated, designed for installation in 6-inch diameter or larger water wells. These motors can be easily rewound & repaired. Marwaan submersible motors are robust, rewindable, and pre-filled with clean water. The stator winding is of PVC or polypropylene insulated copper winding wires. It features water-lubricated radial and thrust bearings.

Dynamically balanced rotors of these Marwaan submersible motors maintain uniform clearance to give better efficiency and increase the life cycle of the water-lubricated bush bearings. Specially designed high-performance thrust bearings are used to withstand high axial thrust loads.

A pressure-equalizing rubber diaphragm guards against pressure and volume variations due to the thermal expansion of water inside the motor. The motor is sealed by O-rings, shaft seals, and sand guards to prevent leakage of motor lubricants and ingress of well water, sand, and fibre particles into the motor. The mounting dimensions of the motors are in accordance with the NEMA standard.



## PRODUCT SPECIFICATION

- Rewindable
- Connecting Piece : Graded CI Casting with CED or PU Paint
- Upper & Lower Housing : Graded CI Casting with CED or PU Paint
- Motor Base : Graded CI Casting with CED or PU Paint
- Stator Shell : SS 304
- Motor Shaft : SS 431 / Shaft Extension SS 304
- Winding Wire : Polypropylene or PVC insulated
- Shaft Extension & Coupling Dimensions: As per NEMA Standards
- Degree of Protection : IP 68
- Max Permissible Temperature : 35°C (Ambient Temp: 45°C)
- Nos. of Starts per Hour : Max 20 at regular intervals
- Voltage Variation : +6%/-10% at rated voltage
- Max Depth Immersion : 500 metres
- Motor Cable Length : 3.0 metres (3 core/4 core)
- Maximum Outer Diameter : 142 mm
- Power Range : 4.0 kW – 45 kW
- Versions :
  - A.C. Three-phase : 380 - 400 - 415 Volt / 50 Hz
  - : 230 - 380 - 460 Volt / 60 Hz
- Direct Online (DOL) : - 4.0kW - 45kW
- Star Delta : - 7.5kW - 45kW
- Speed : 2900 RPM
- Type of Duty : S1 (Continuous)

## PRODUCT FEATURES

- Marwaan Submersible Motors are robust, rewindable, and pre-filled with clean water and anti-corrosion fluid
- Stator shell with corrosion-resistant Stainless Steel
- Bearing: Water-lubricated radial and thrust bearing
- Shaft extension made of Stainless Steel AISI 304
- High-efficiency electrical design for lower operating cost
- Pressure compensation diaphragm

## PRODUCT APPLICATION

Marwaan prime mover submersible motors are suitable to couple with deep well submersible pumps used for:

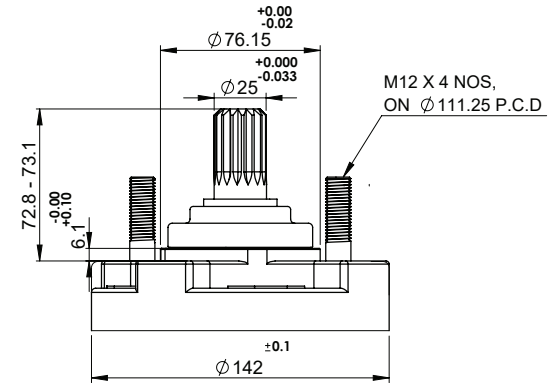
- Residential Purpose
- Irrigation
- Fountains
- Industrial Water Supply
- Pressure Boosting Units
- Gardens & Horticulture
- Drip & Sprinkler Systems
- Mining Industries
- Oil & Gas Industries
- De-watering
- Fire Fighting







# 6" WATER FILLED CI PREMIUM SUBMERSIBLE MOTOR



Sr. NO.	DESCRIPTION	QTY.
1	MOTOR BASE	1
2	BREATHER DIAPHRAGM	1
3	DIAPHRAGM SPRING	1
4	THRUST BEARING HOUSING	1
5	ROCKER SUPPORT	1
6	THRUST BEARING	1
7	LOWER BUSH HOUSING	1
8	CARBON BUSH	4
9	STATOR STAMPING	AS PER S.L.
10	STATOR TUBE	1
11	ROTOR	1
12	FLANGE	2
13	UPPER BUSH HOUSING	1
14	MECHANICAL SEAL	1
15	MECHANICAL SEAL CAP	1
16	CONNECTING PIECE	1
17	S.S. COLLER STUD	4
18	SPRING CAP	1
19	INSULATED WINDING WIRE	

