



**SUBMERSIBLE PUMPS & MOTORS  
(50 HZ / 60 HZ)**

[www.marwaanpumps.com](http://www.marwaanpumps.com)



**CHASING EXCELLENCE**  
AGRICULTURE ▪ INDUSTRIAL ▪ RESIDENTIAL



**ADDRESS:**  
117, VIHAN SQUARE, ODE,  
DASKROI, AHMEDABAD - 382425,  
GUJARAT, INDIA

**CALL US:**  
+91 94271 04110

**EMAIL:**  
marwaanpumps@gmail.com  
export@marwaanpumps.com  
**WEB:** www.marwaanpumps.com

**GSTN NO:** 24ACDFM8689G1ZS

**PAN NO:** ACDFM8689G



# 4" OIL FILLED SUBMERSIBLE MOTOR

**Marwaan** submersible motors are oil-lubricated, designed and sized for installation in 4-inch diameter or larger water wells. These motors operate in Capacitor Start Capacitor Run (CSCR) & Capacitor Start Run (CSR) systems and can be easily rewound and repaired.

These **Marwaan** submersible motors are equipped with quality ball bearings, maintain uniform clearance to give better efficiency and increase the life cycle. The stator winding is of enamelled copper, insulation Class-H winding wire. High-quality carbon/ceramic mechanical shaft seal and oil seal made of Nitrile rubber are used to ensure a better sealing system. Plug and socket removable cable leads are provided for easy maintenance and safe handling.

Pressure-equalizing rubber diaphragm is provided to guard against pressure and volume variations due to thermal expansion of oil inside the motor. The motor is sealed by O-rings, shaft seals, and sand guards to prevent leakage of motor lubricant and ingress of well water, sand, and fibre particles into the motor. Mounting dimensions of motors are in accordance with "NEMA" standard.



## PRODUCT SPECIFICATION

- Upper & lower Housing : Graded CI Casting with Epoxy Paint or CED Coating  
Also available with SS Cladding.
- Motor Base : SS 304
- Stator Shell : SS 304
- Motor Shaft : SS 431
- Winding Wire : Enamelled Copper, Insulation Class-H
- Shaft Extension & Coupling Dimensions: As per NEMA Standards
- Degree of Protection : IP 68
- Max Oil Temperature : 35°C
- Nos. of Starts per Hour : Max 20 at regular intervals
- Voltage Variation : +6%/-10% at rated voltage
- Max Depth Immersion : 300 metres
- Motor Cable Length : 3.0 metres (3 core/4 core)
- Maximum Outer Diameter : 98 mm
- Power Range : 0.37 kW – 2.20 kW - Single Phase  
1.10 kW – 5.50 kW - Three Phase
- Versions :
  - A.C. Single-phase : 220–230 Volt / 50 Hz
  - A.C. Three-phase : 380 - 400 - 415 Volt / 50 Hz  
220 - 380 - 460 Volt / 60 Hz  
Direct Online (D.O.L.)
- Type of Duty : S1 (Continuous)

## PRODUCT FEATURES

- Marwaan Submersible Motor lubricated & cooled by non-toxic, eco-friendly fluid of high dielectric strength
- Lubricated ball bearings for trouble-free, long-lasting operation
- Shaft extension made of Stainless Steel AISI 420
- Mechanical shaft seal (Carbon/Ceramic) provided
- High-efficiency electrical design for lower operating cost
- Single-phase motors are Capacitor Start Capacitor Run (CSCR) & Capacitor Start Run (CSR) design
- Pressure compensation diaphragm
- All single-phase motors require a control box

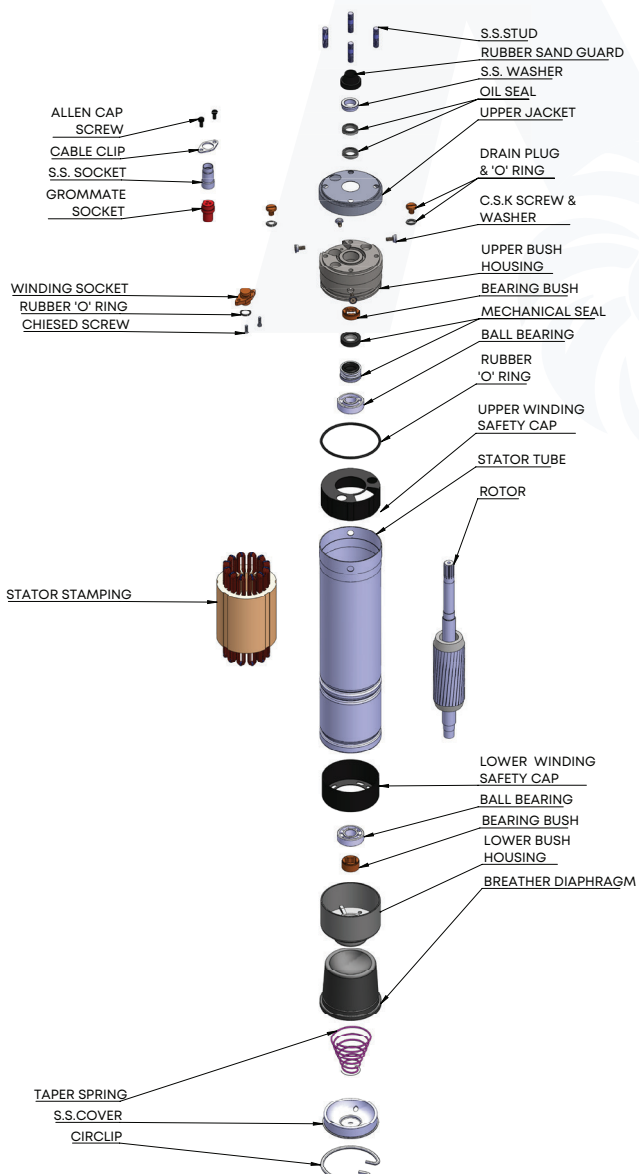
## PRODUCT APPLICATION

Marwaan prime mover submersible motors are suitable to couple with deep well submersible pumps used for:

- Residential Purpose
- Irrigation
- Fountains
- Industrial water supply
- Pressure Boosting Units
- Gardens & Horticulture
- Drip & Sprinkler Systems

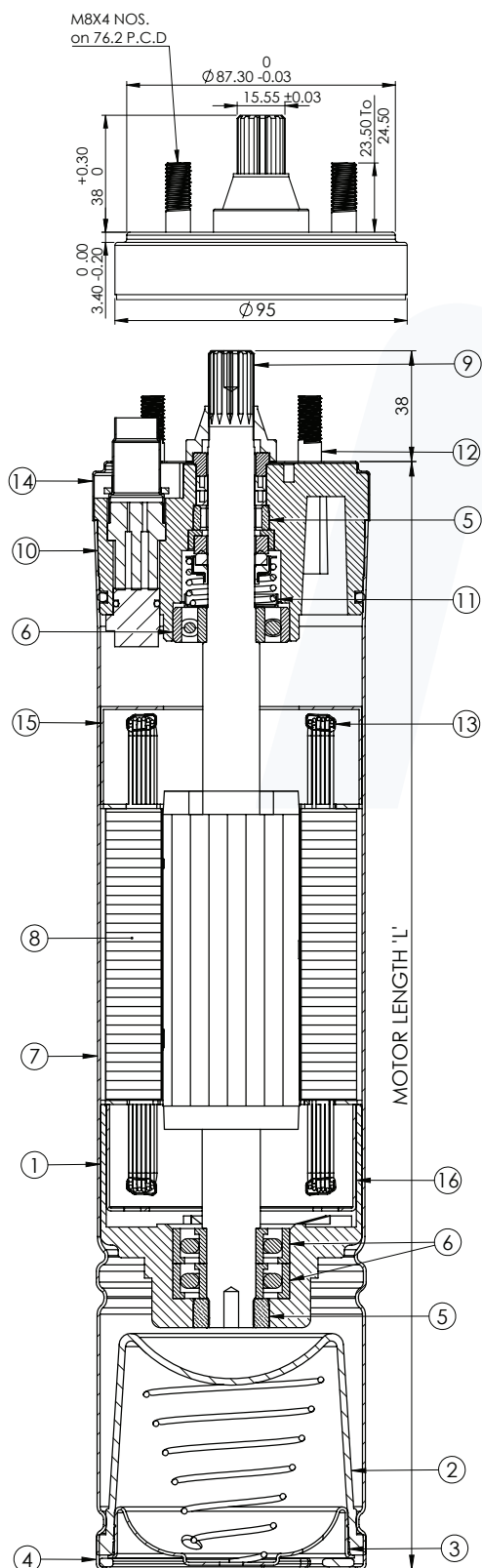








# 4" OIL FILLED SUBMERSIBLE MOTOR TYPE B



Sr. NO.	DESCRIPTION	QTY.
1	LOWER BUSH HOUSING	1
2	BREATHER DIAPHRAM	1
3	S.S Cover	1
4	CIRCLIP	1
5	BEARING BUSH	2
6	BALL BEARING	3
7	STATOR TUBE	1
8	STATOR STAMPING	AS PER S.L.
9	ROTOR	1
10	UPPER BUSH HOUSING	1
11	MECHANICAL SEAL	1
12	S.S. STUD	4
13	WINDING WIRE	
14	UPPER JACKET	1
15	UPPER WINDING CAP	1
16	LOWER WINDING CAP	1

